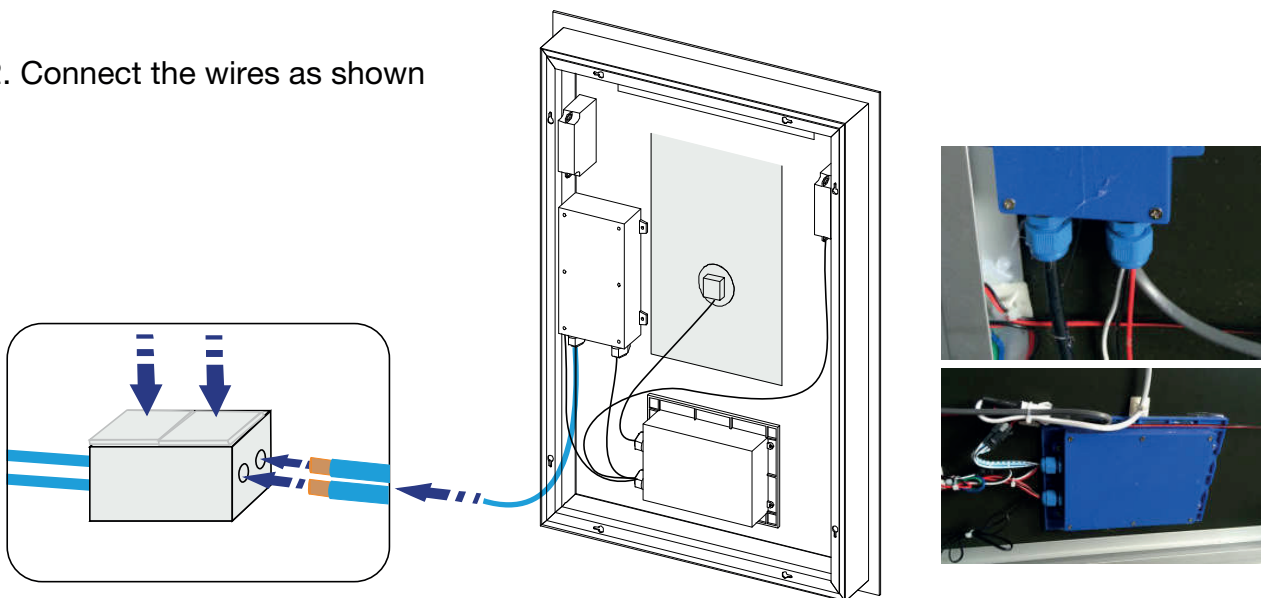


LED Mirrors - Fitting Instructions

1. Measure the distance between the hangers on the mirrors frame. Drill 2 level holes (spirit level is important). Use the required expanding fixing for your wall. Drive the screws into the wall fixings – leaving 6-8mm showing.

2. Connect the wires as shown



3. Hang the mirror onto the 2 screws.
Release slowly to make sure the mirror feels stable and tight.

